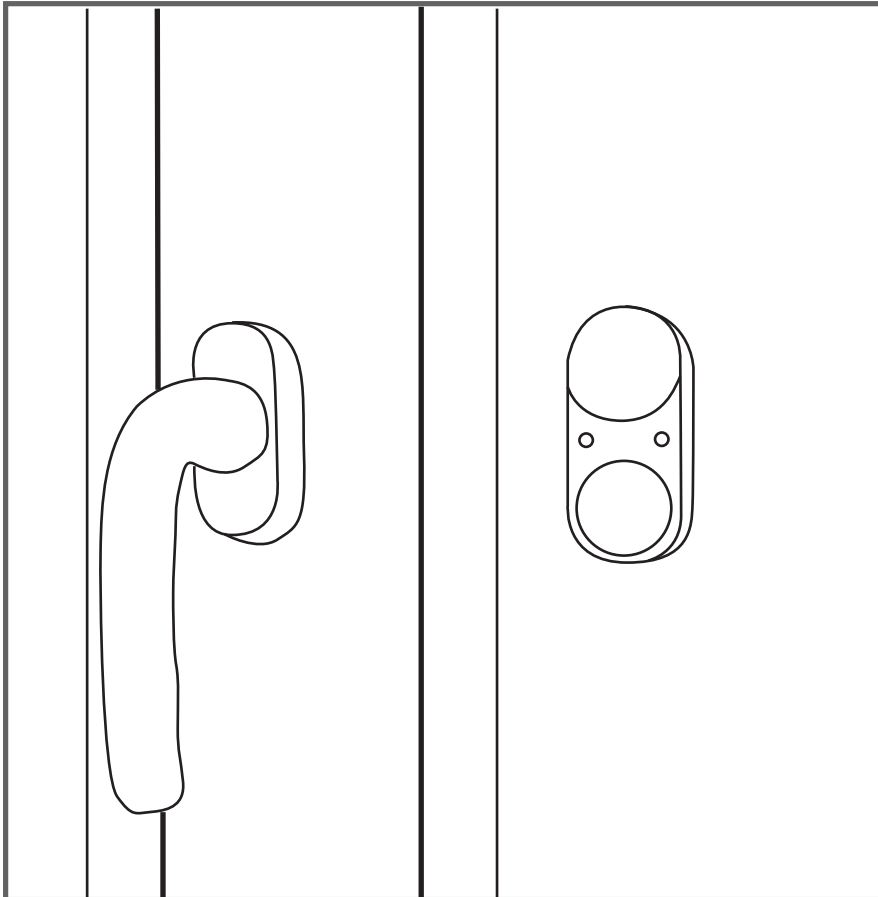


Installation instructions
GEALAN-SENSE® glass

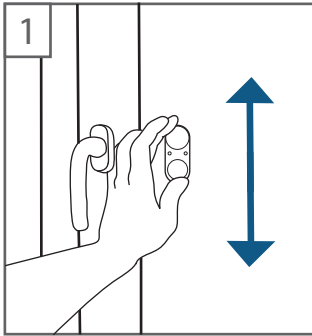


Details:

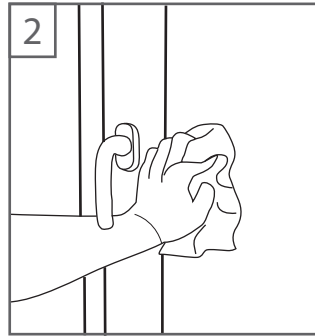


Installation instructions

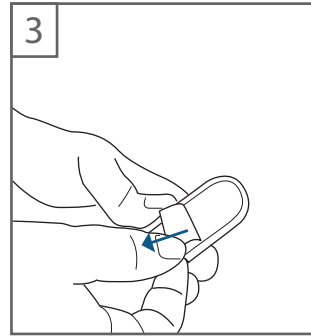
GEALAN-SENSE® glass



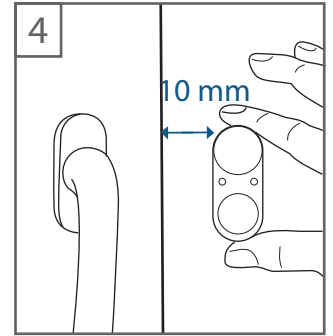
1 Find a suitable place close to the window frame



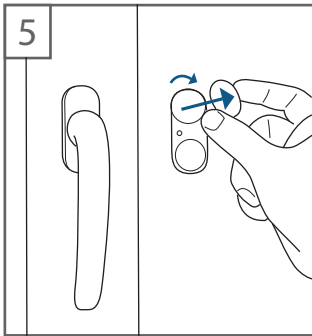
2 Clean the previously chosen area with a cloth



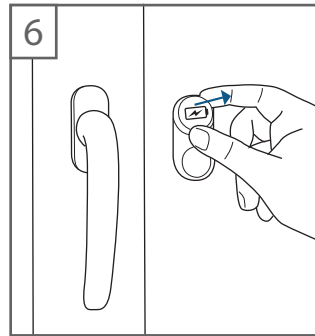
3 Remove the protective film of the adhesive strip on the back



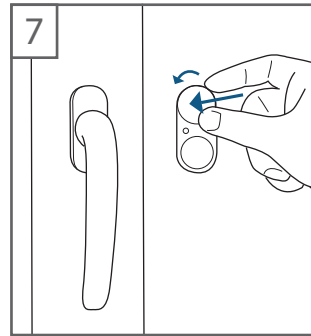
4 Maintain a minimum distance of 10 mm from the window frame



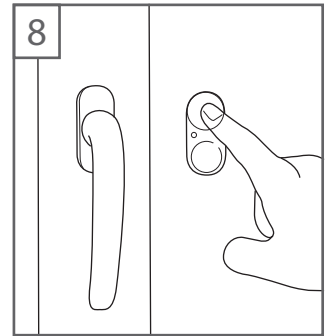
5 Turn the battery cover clockwise and remove it



6 Insert the battery



7 Place the battery cover back in position and close it by turning it anti-clockwise



8 Immediately after attaching the sensor, press the left-hand button to generate a 30-second test

All components contained in the box

1. Glass breakage sensor
2. CR2477 battery
3. Window marking

Things to consider before installation

- If the window is larger than 2 m², please use two glass breakage sensors
- To avoid error messages, the minimum distance from the window frame should be 10 mm

Good to know!

- Attaching the sensor

Before attaching the sensor, it is important to remove fine dust from the chosen area.

- Meaning of the LEDs and sounds

When the battery is discharging, the red LED flashes every 10 minutes. A high-pitched tone sounds at the same time.

- Resetting the glass breakage sensor

Remove the batteries, wait 20 seconds and insert them again.

- Alarm duration

The alarm duration is two minutes. If the alarm needs to be deactivated before this time, this can only be done by removing the batteries.

