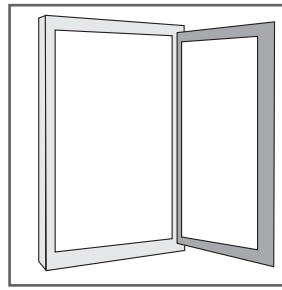
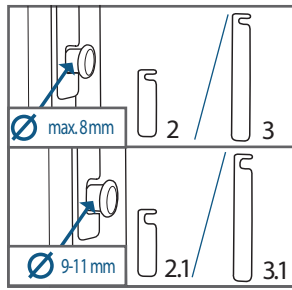
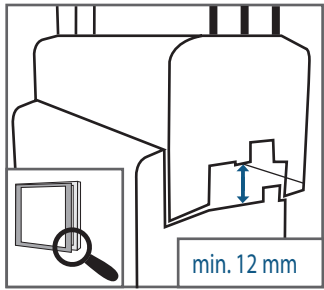
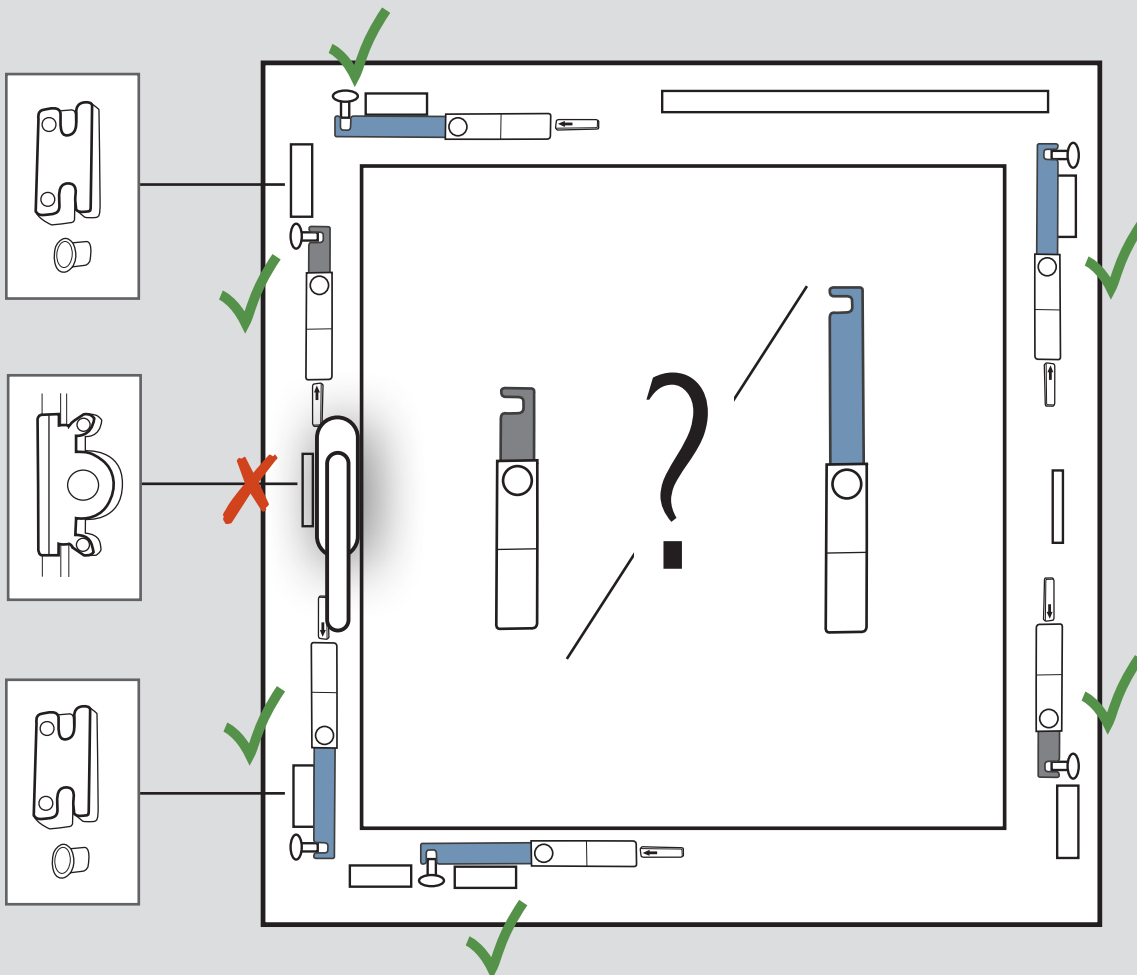
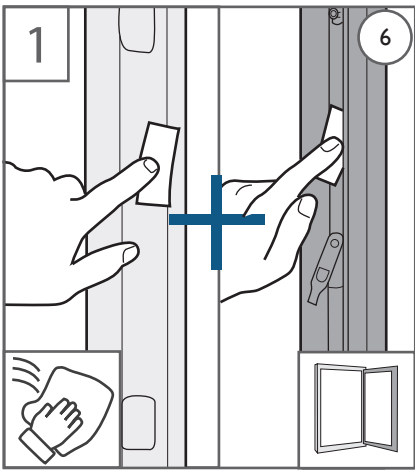


Installation instructions  
GEALAN-SENSE® window

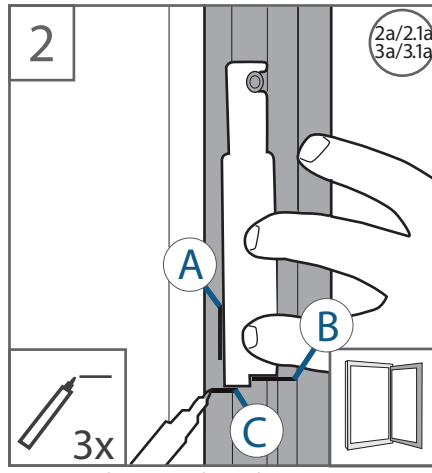


Details:

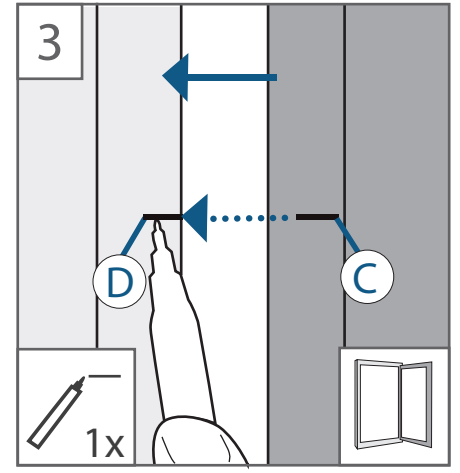




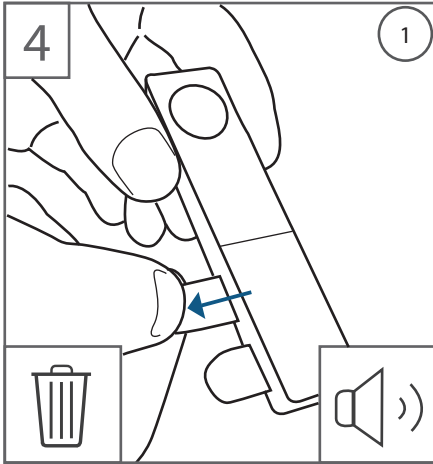
1 Find a suitable place for the opening sensor and magnet and clean them with the enclosed alcohol pad. Wait a short time for them to dry.



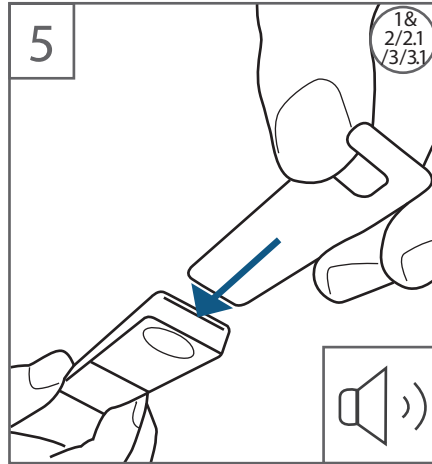
2 Use a template to apply markings A, B, C to ensure the correct distance is maintained



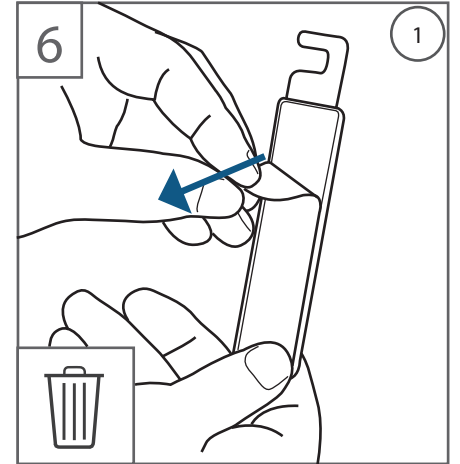
3 Transfer marking C from the window casement and mark new line D on the window frame.



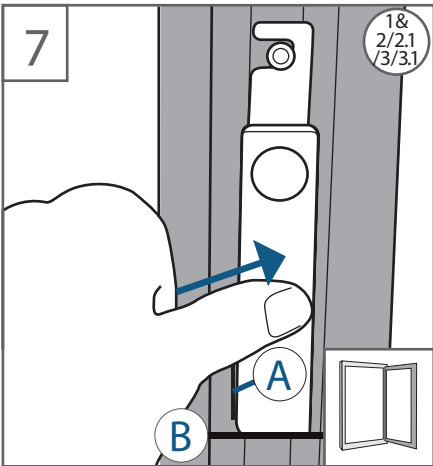
4 Remove the battery disconnecter – a dull tone will sound.



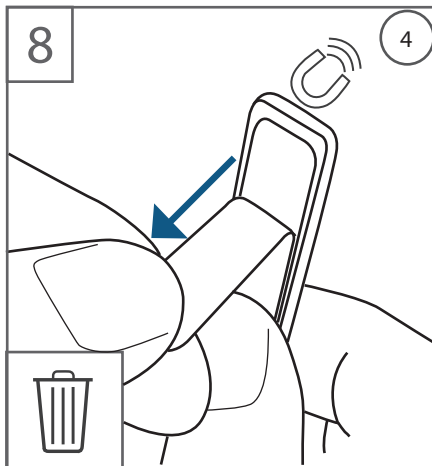
5 Push the slider corresponding to the template into the opening provided. One or two tones will sound depending on the position of the slider.



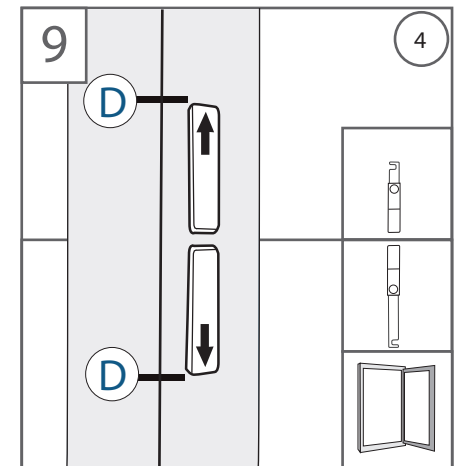
6 Remove protective film from the back of the opening sensor.



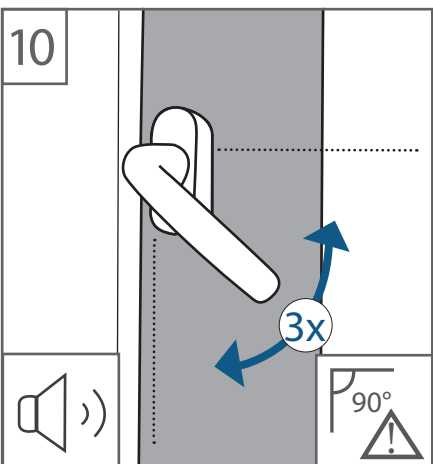
7 Attach module to marking A and B.



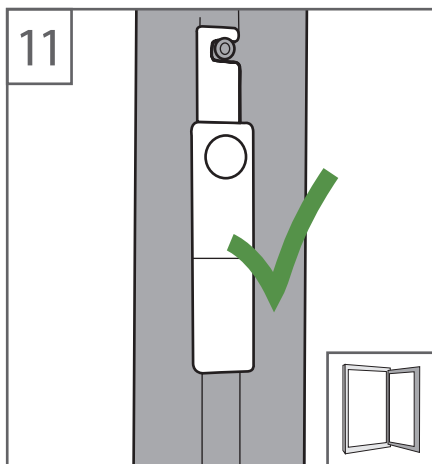
8 Remove protective film from the back of the magnet.



9 Apply the magnet to the window frame above or below, depending on the alignment of the module, at marking D (Fig. 3)



10 Opening sensor ready for initialisation: Open and close the handle three times until two dull tones sound.



11 Module is in operating mode!

### **All components contained in the box**

1. Opening sensor
2. Small slider, 8 mm
- 2a. Small template, 8 mm
- 2.1 Small slider, 11 mm
- 2.1a Small template, 11 mm
3. Large slider, 8 mm
- 3a. Large template, 8 mm
- 3.1 Large slider, 11 mm
- 3.1a Large template, 11 mm
4. Magnet
5. Window marking
6. Alcohol pad
7. Screwdriver

### **Things to consider before installation**

- Window rebate clearance should be at least 12 mm
- The mushroom pin in the window casement should be max. 8 mm or 11 mm in diameter
- The window frame is shown on a white background in the installation instructions. The window casement is shown on a grey background
- You can see where the opening sensor can be attached on the large window
- Simply scan the QR code for a detailed installation video

### **Good to know!**

#### **- Attaching the module and using the templates**

The short template is primarily used. The long template is used only if there are protruding parts of the window fitting on the adhesive side of the module and if the module can be attached more cleanly at a greater distance from the mushroom pin. Depending on the condition of the window, the module can also be rotated 180° before being attached, so that the slider is positioned under the module. In this case, the remaining work steps must be adapted accordingly.

#### **- Meaning of the LEDs**

If the battery disconnectors are removed, light green and red LEDs illuminate briefly.  
If the slider is inserted, the light green LED illuminates.  
If the window is closed, the red LED illuminates.  
If the handle is moved to the closed position, both LEDs illuminate. Red and light green.  
Once initialisation is complete, both LEDs go out.  
If the alarm is triggered, the red LED also illuminates.

#### **- Meaning of the sounds after initialisation**

If the window is closed and the handle is moved to the closed position, there is a brief, high-pitched confirmation tone.  
If the battery level is low, this can be detected by a low-pitched tone each time the window is activated.

#### **- Resetting the opening sensor**

Remove the batteries, wait 20 seconds and insert them again.

#### **- Alarm duration**

The alarm duration is ten minutes. If the alarm needs to be deactivated before this time, this can only be done by removing the batteries.